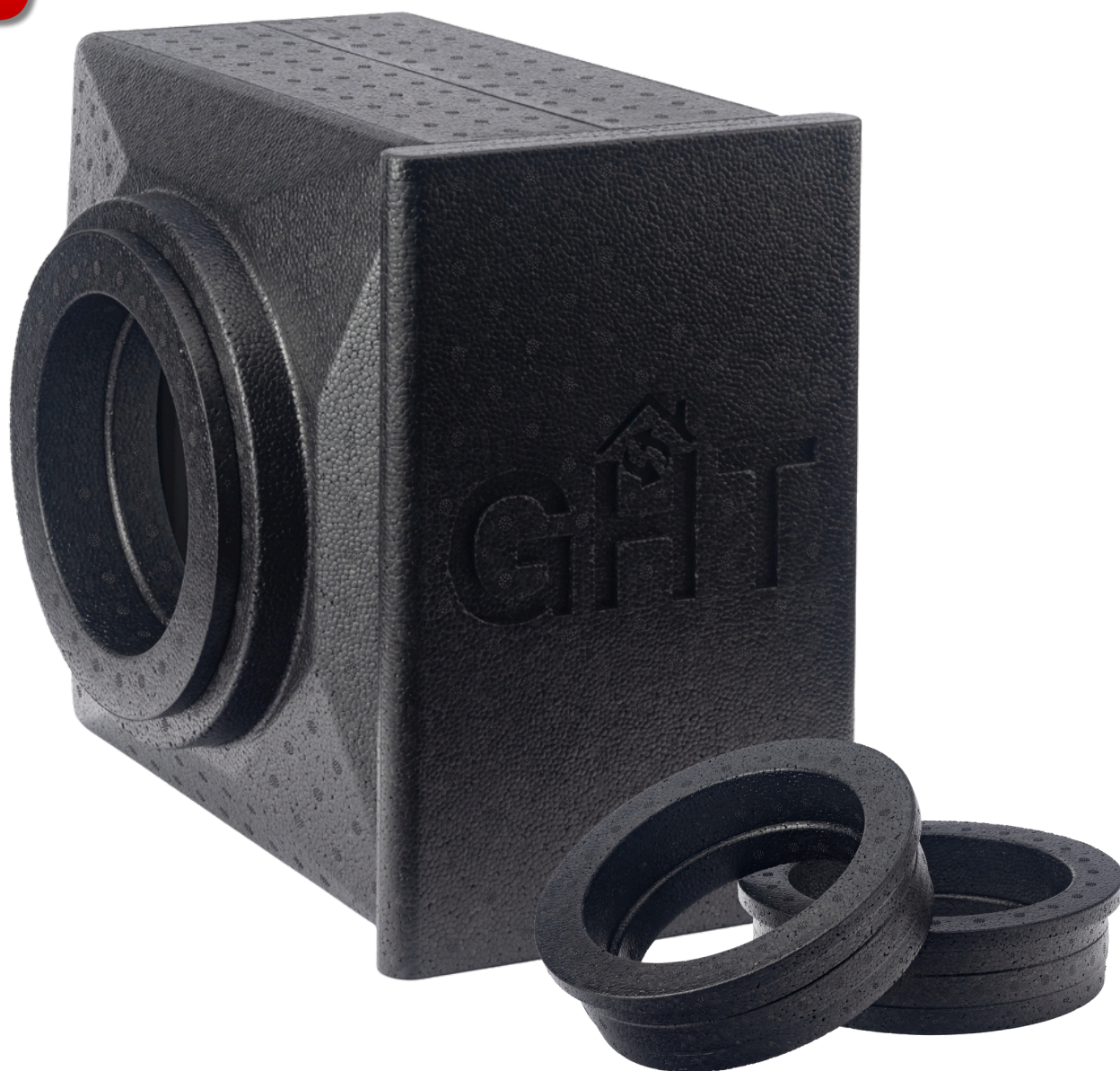


Installation manual

PureFlow 200

NEW



INTERNATIONAL 2026

Valid from 1st of January 2026

- Please read this instruction manual completely before installing the product.
- Installation work must be performed by authorized personnel only.
- Please retain this installation manual for future reference after reading it thoroughly.

Safety Precautions

Thank you for purchasing **Pureflow 200** inline filter box

*READ THESE INSTRUCTIONS CAREFULLY BEFORE INSTALLING AND USING THE EQUIPMENT!
THIS INSTRUCTION HAS BEEN MADE WITH THE GREATEST CARE.*

HOWEVER, THIS INSTRUCTION CONFERS NO RIGHTS. WE RESERVE THE RIGHT TO CHANGE ALL OR PART OF THE CONTENTS OF THIS INSTRUCTION WITHOUT PRIOR NOTICE.

This instruction contains all information necessary for an optimal installation and startup by skilled personnel.

It is absolutely important to follow the instructions in this manual very thoroughly in order to guarantee the correct function of the unit. Not following the instructions in this manual and/or using non-original parts lead to a lapse of any warranty and liability claims.

Please contact your dealer for further assistance if there are any questions left which are not covered in this manual.

0 Brief product description

The inline filter box is manufactured from EPP (Expanded Polypropylene), a material known for its excellent thermal and sound insulation properties. Thanks to this innovative material, the filter box does not require any additional insulation and simplifying system integration. Quick and easy filter replacement

The filter box can accommodate up to three filters. To ensure high filtration of the incoming outside air, the combination of filters can be used. As pre-filter ISO Coarse 75% / MERV 8 filter should be used. An ePM1 60% (F7) / MERV 13 filter or a Carbon 250g F7 (ePM2.5 65%) filter can be installed as additional in different combinations.

Filters must be replaced every **3 to 6 months**, depending on the quality of the outside air.

1 Warranty and Liability

1.1 General

Our general terms and conditions in its current version apply to inline filterbox PurFlow 200. The warranty period begins with the initial startup, but at the latest one month after delivery. This warranty only covers materials, not service. It is only valid if maintenance has been performed according to our specifications by an authorized plumber.

1.1.1 Warranty Terms

The warranty period of our units is 2 years beginning on the date of delivery. The warranty only covers defects in material or construction faults that occurred during the warranty period.

The warranty expires if:

- after the warranty period has elapsed;
- the unit is used without genuine filters;
- parts are used, that have not been delivered by the manufacturer;
- the unit is used improperly;
- defects occur due to improper connection or use and decontamination of the system;
- non-authorized modifications are made.

Liability

The filter box has been developed and produced for use in so called comfort ventilation systems and Controlled-environment agriculture (CEA). Any other use is considered an improper use and can lead to damages to equipment and persons; the manufacturer is not liable in such cases. The manufacturer is not liable for any damages caused by:

- non-compliance of safety, operation and maintenance notes;
- improper installation;
- use of non-authorized parts;
- defects that occur due to improper connection or use and decontamination of the system;
- after the warranty period has elapsed;
- normal wear and tear.

2 Safety Instructions



Please obey the safety instructions in this manual.

- The installation of the unit has to be carried out in accordance to local building, safety and installation regulations.
- Please obey the warnings and safety instructions, notes and instructions in this manual.
- Please keep this manual next to the unit.

2.1 Symbols used

The following symbols are used in this manual:



Attention, special note!



***Risk of: - physical injury of user or installer
- damaging the unit
- failures if the instructions are not followed thoroughly***

3 Shipping, Unpacking, Package Contents



Please do not remove the packaging until installation! Please dispose the packaging environmentally friendly.



Protect the open ends (spigots) against dust and humidity before and during mounting work breaks!



3.1 Checking the Package Content

In case of damages or incompleteness of the product delivered, please contact the supplier immediately.
Package contents are:

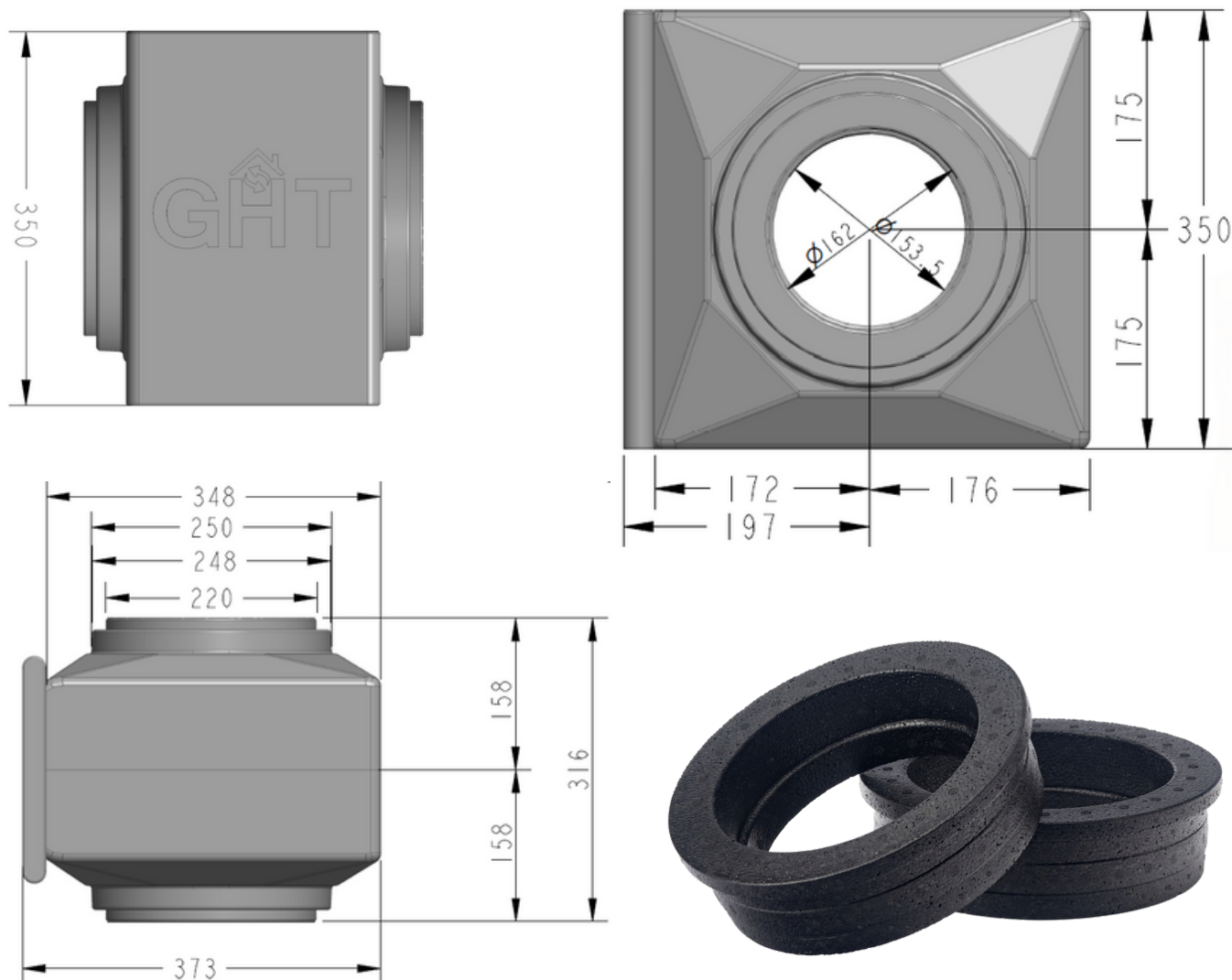
- PureFlow 200 filterbox - 1pc
- DN200 → DN160 adapter - 2pc

4 Installation

4.1 Mounting



Please assure a minimum clearance of 0.5 meter for maintenance purposes in front of the filterbox.



4.2 Air duct connection:

Connect the air ducts to the corresponding duct connections DN 200 (8") or DN 160 (6") if adapters are used.
Seal all air duct connections ensuring air tightness.

5 Maintenance



Periodic maintenance is absolutely necessary for the system to run properly.

The following maintenance work can be carried out by the end user:

- Replacement of the filter;
- Cleaning of the unit

5.1 Filter Replacement

It depends on the operating conditions how often the filter has to be replaced. We recommend changing the filters when changing the filters of the heat recovery unit.



Replace the filter (at least) every six months. In case of carbon filter - depending on air pollution

- 1 Stop the ventilation unit or fan;
- 2 Open front door, pull out filter;
- 3 Insert new filter;
- 4 Close front door.



Only use genuine filters provided by the manufacturer.

Contacts

"GHT SOLUTIONS" Ltd
18; Block 19 Vincenti Bld, Strait Street, VLT 1432, Valletta, MALTA
www.ghsolution.com